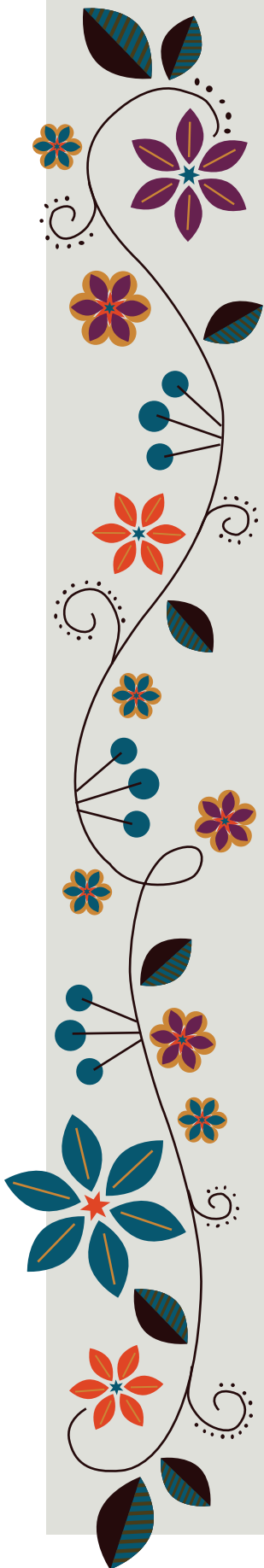


Seasonal Garden To-Do List

WINTER



1. Save empty food containers for seed starting
2. Order seeds, plants and trees
3. Start seeds indoors (or winter sow them)
4. Plant strawberries (late winter)
5. Plant early spring vegetable garden (late winter); set up cloches, cold frames or hoop houses to protect them
6. Force spring bulbs to enjoy indoors
7. Prune fall and spring flowering trees and shrubs
8. Prune roses
9. Mulch any spring plants that come up early
10. Knock snow off of shrubs to prevent damage
11. Harvest winter vegetables and remaining root vegetables, carrots, cabbage, Brussels sprouts, etc.
12. Repair fencing and garden supports
13. Sharpen garden tools
14. Sharpen lawn mower blade
15. Dust/clean houseplants
16.
17.
18.
19.
20.
21.
22.
23.
24.
25.